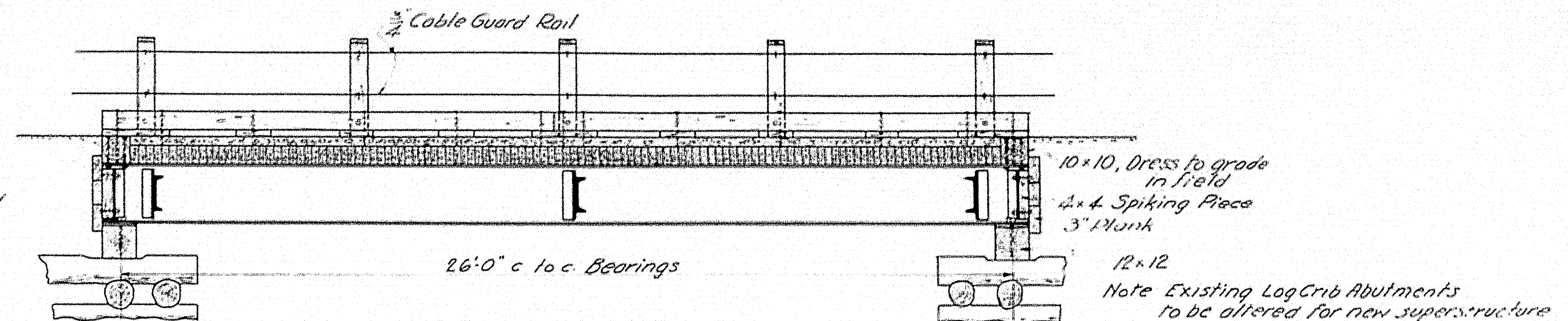
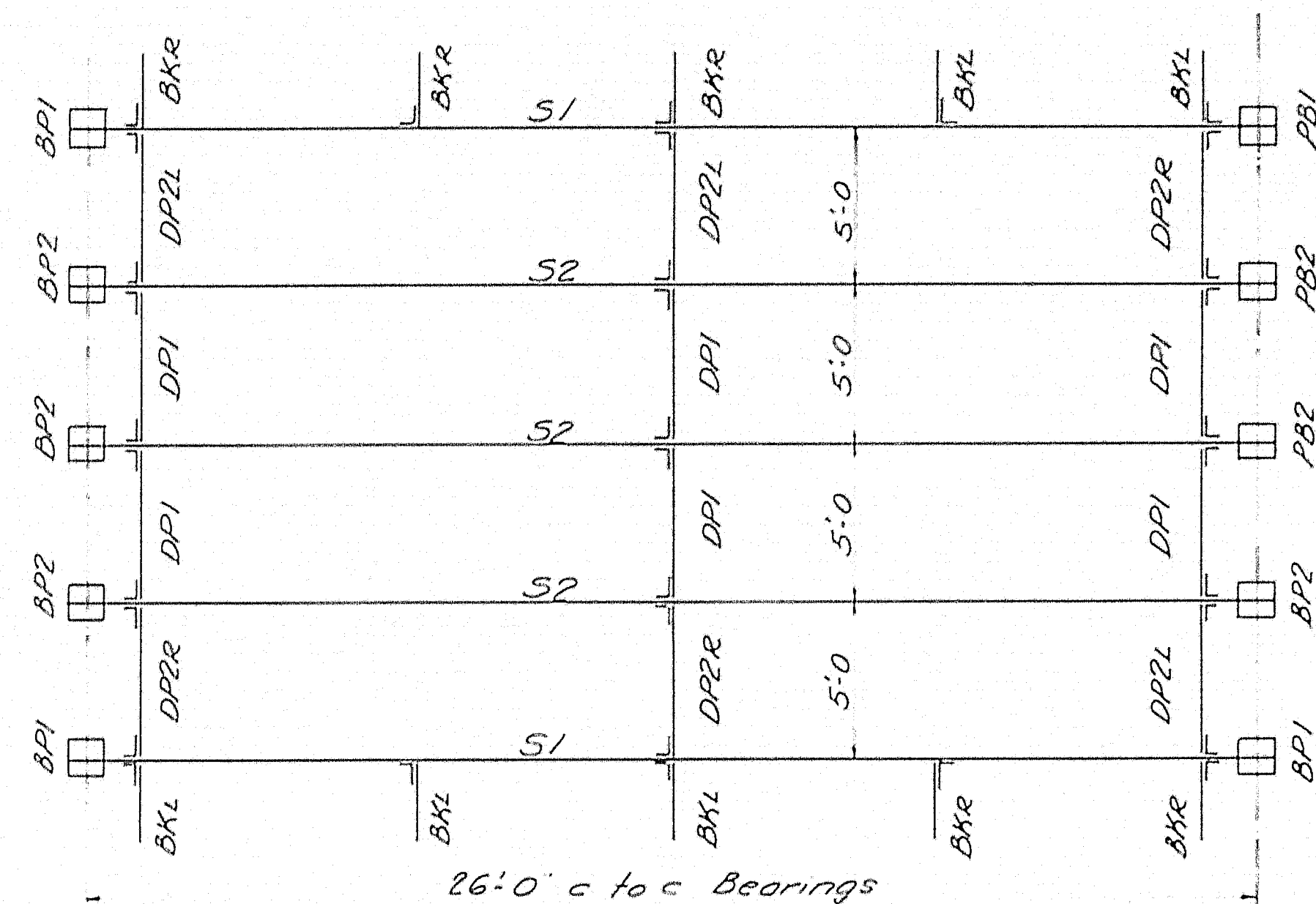


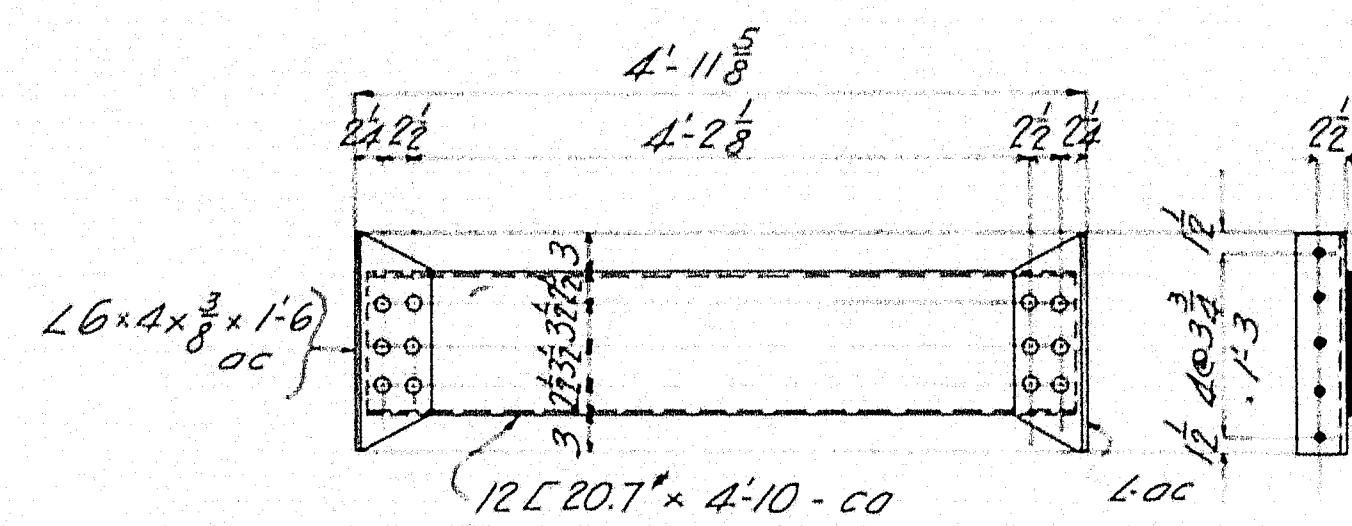
TRANSVERSE SECTION - SUPERSTRUCTURE



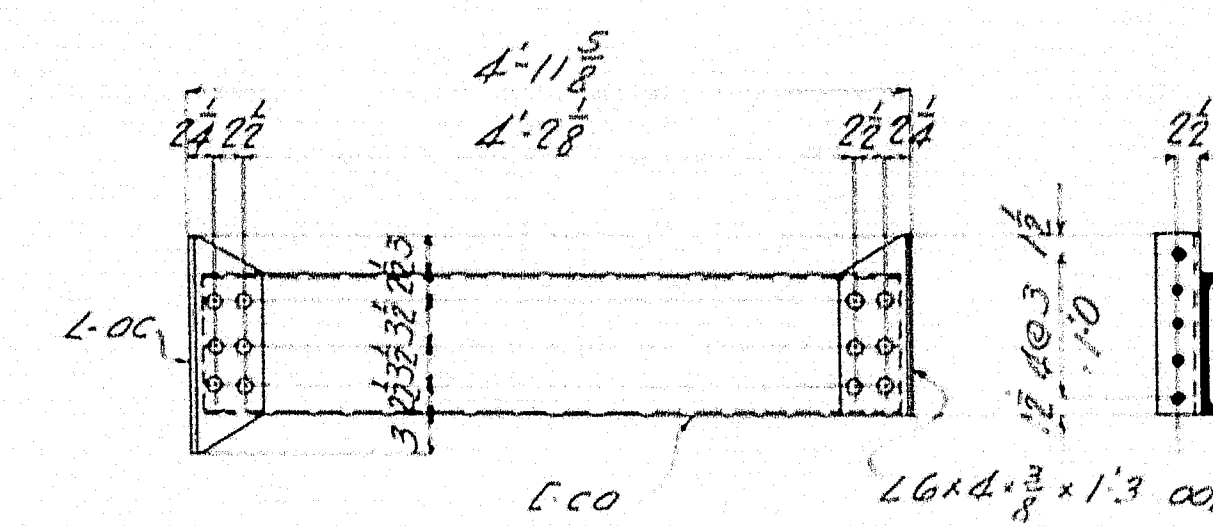
LONGITUDINAL SECTION



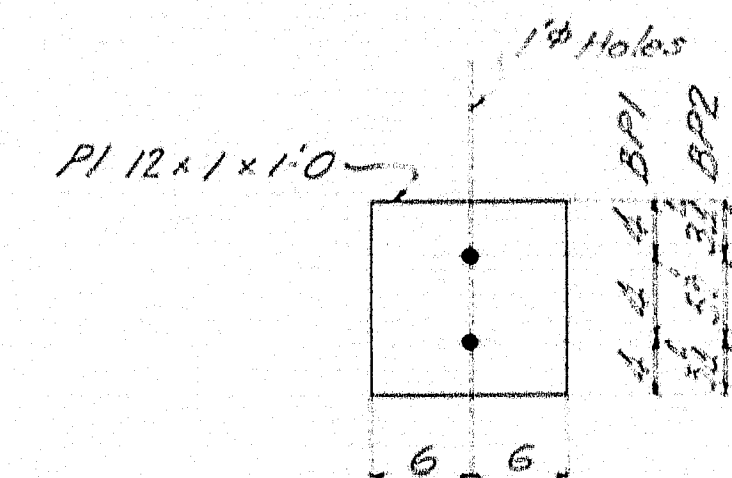
ERECTION DIAGRAM



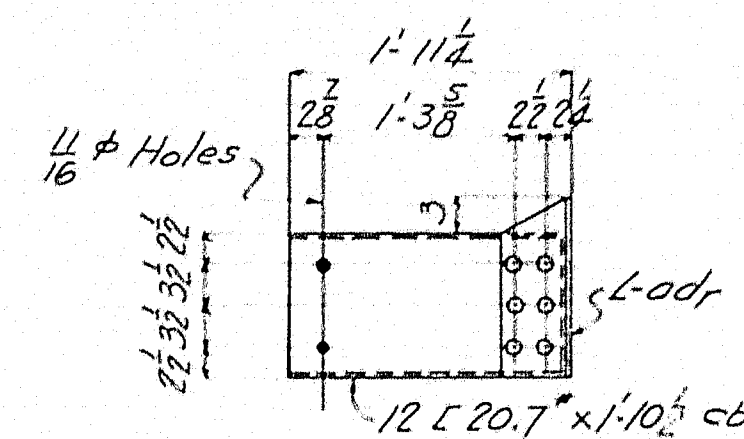
DIAPHRAGM DPI



DIAPHRAGM DP2R



BEARING PLATES BPI + BP2

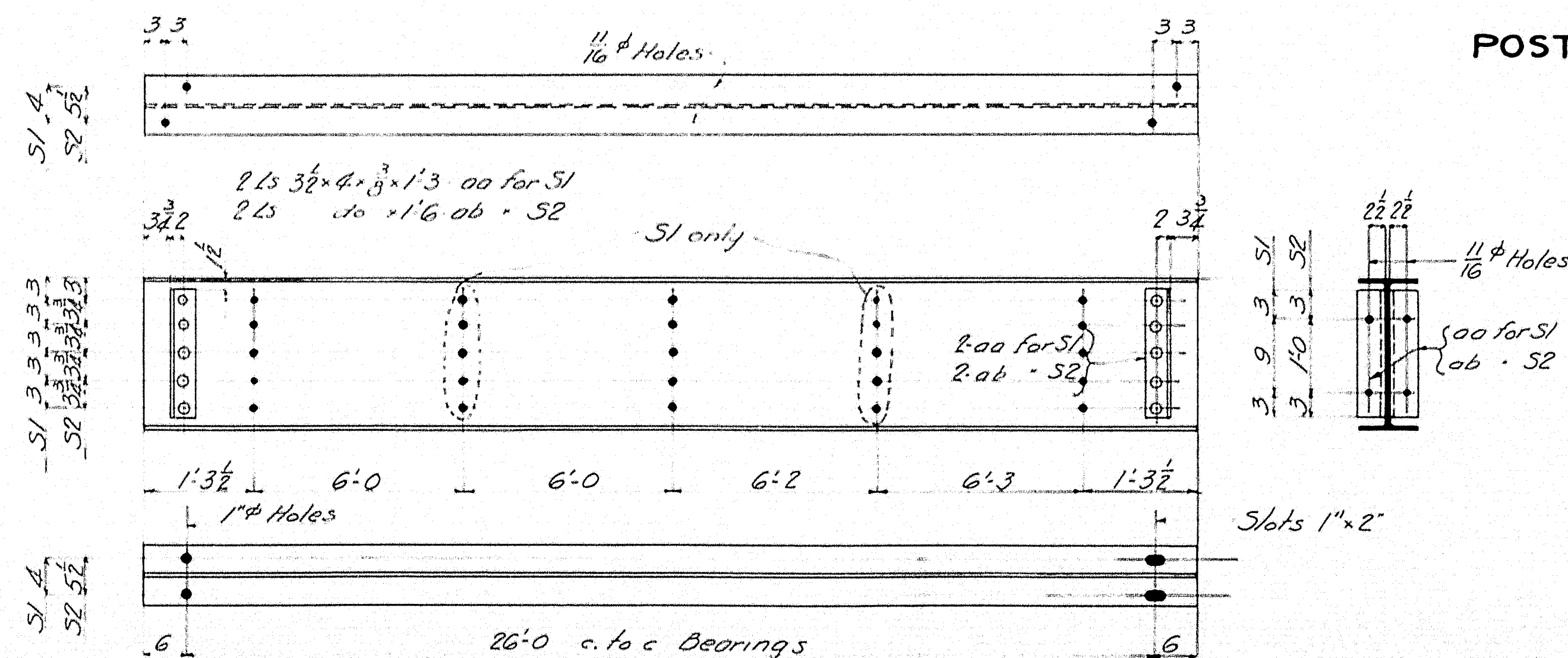


POST BRACKET BKR

REQUIRED LIST				
No.	Qty.	Mark	Description	Remarks
2		S1	Exterior Beam	
3		S2	Interior Beam	
6		DPI	Int. Diaphragm	
3		DP2R	Ext "	
3		DP2L	" "	Opp. to DP2R
5		BKR	Post Bracket	
5		BKL	" "	Opp. to BKR
4		BPI	Bearing Pl.	
6		BP2	" "	

BOLTS AND HARDWARE			
No.	Rept. Size	Description	Remarks
100	1/2" x 2 1/2"	Mch Bolts	Brackets + Diaphragms
20	3/4" x 10	"	End Timbers to Beams
20	3/4" x 1"	"	Posts to Brackets
10	3/4" x 1/2"	Cg. Bolts	End 3/4" Pls
26	3/4" x 20	"	Curbs
10	3/4" x 13	"	Posts to Curb
20	3/4" x 8	Log Screws	Bearing Pls
100	3/4" x 10	Lock Washers	Std 1/2" x 10
50	3/4" x 10	Pl Washers	1 1/2" x 10 (except 1/2" x 10)
20	3/4" x 8	"	7/8" x 8
26	3/4" x 8	"	2 1/2" x 8 1/2" Holes

Note: All bolts and nuts to be U.S. Std. or American Bridge Std.; machine bolts to have hex heads; all nuts to be hex nuts.



BEAM S1 - 17 7/8" x 47" x 27'-0"
S2 - 20 7/8" x 59" x 27'-0"

General Notes

Specifications: Maine State Highway Commission for Steel Highway Bridges, 1936.
Loading: H15
Rivets: 3/4" (unless otherwise noted).
Paint: One shop coat Red Lead and Oil, Maine State Highway Commission Specification.
Field Connections: Bolted.

BRIDGE MAINTENANCE
TOWN No. 04-35
BRIDGE No. 3265
STATE HIGHWAY COMMISSION
BRIDGE DIVISION
ALDER STREAM BRIDGE
IN
JIM POND TWP (TI-R5)
FRANKLIN COUNTY
SUPERSTRUCTURE-OVERFLOW SPAN
Sheet 1 of 1 Augusta, Maine, April, 1937

27-98